

#### GENERAL NOTES:

TURNLOCK-150TASTG2(114) = 2 DIRECTIONS ELECTRICALLY CONTROLLED.

ANODIZED ALUMINUM CONSTRUCTION.

MINIMUM PAD SIZE SHOWN. MUST BE LEVEL WITHIN 1/4".

ALLOW 2" [50.8MM] FOR REMOVAL OF 2PC COVER.

#### ELECTRICAL NOTES:

POWER SERVICE OPTIONS:

1. 24 VDC
2. 110 VAC SINGLE PHASE
3. 220 VAC SINGLE PHASE 50/60HZ
4. 220 VAC DUAL PHASE 50/60HZ

15A MAINS SERVICE REQ'D

4 LOCATIONS AVAILABLE FOR CONDUIT ACCESS.

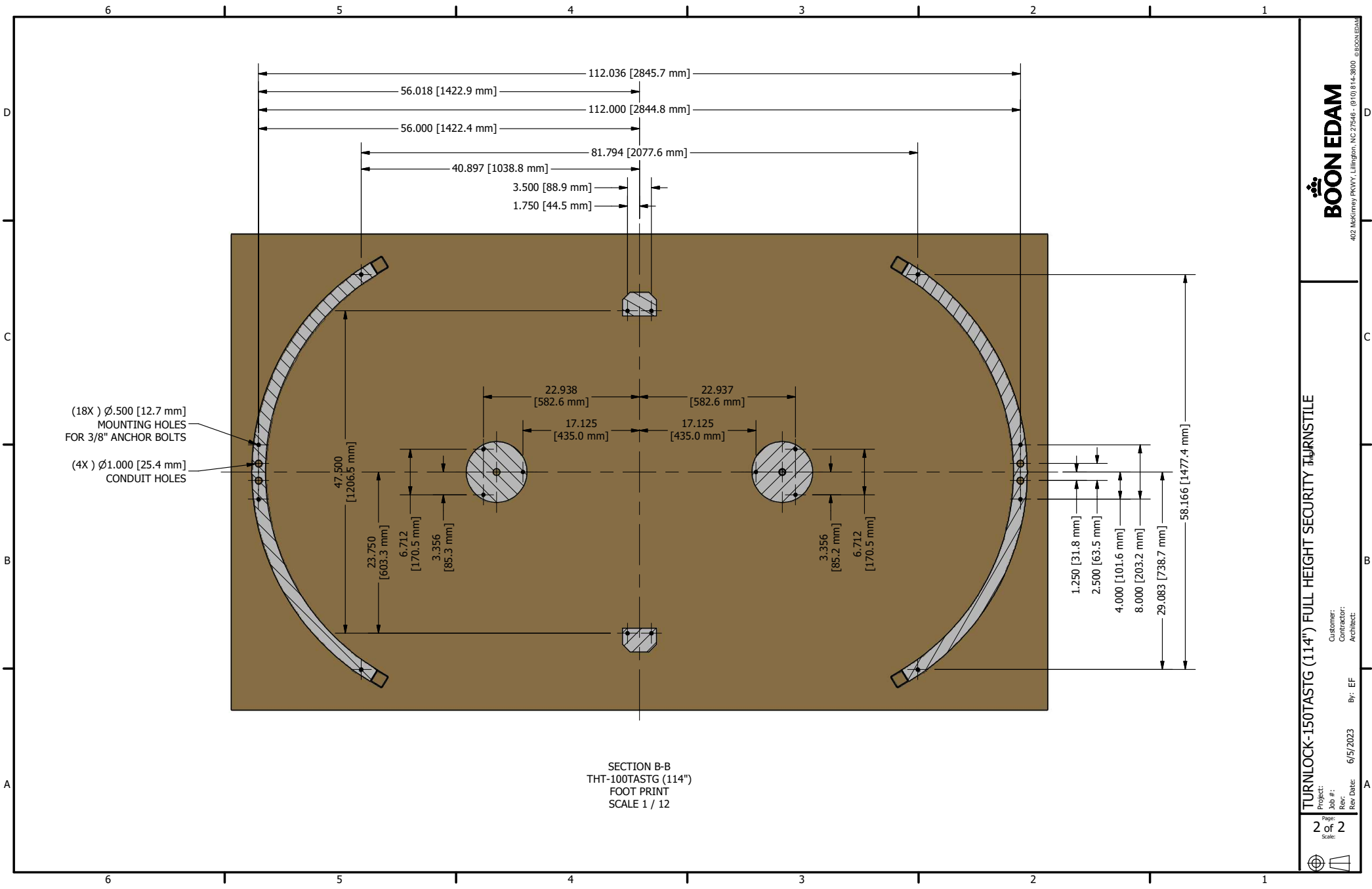
AUTHORIZATION, FIRE ALARM REQUIRES DRY CONTACT FROM ACCESS CONTROL.

#### CODED NOTES:

1. SHIELD ASSEMBLY, WELDED, (2)TYP. - ANODIZED ALUMINUM WITH LEXAN PANELS
2. BARRIER ASSEMBLY, WELDED - ANODIZED ALUMINUM
3. ROTOR ASSEMBLY, WELDED (3), (2)TYP- ANODIZED ALUMINUM
4. CEILING PLATE (2) - ANODIZED ALUMINUM
5. MECHANISM CHANNEL - STEEL, POWDERCOATED
6. 2PC CHANNEL COVER (WIDE) - STAINLESS STEEL
7. BASE PLATE (2) - ANODIZED ALUMINUM
8. BOTTOM BEARING (2).
9. BOTTOM FLANGE (2).
10. ANCHOR BOLTS (18), PROVIDED
11. HEEL PROTECTORS (6)

#### OPTIONS:

- LEFT ROTOR OPERATION - FIELD CONFIGURABLE FL/FS
- RIGHT ROTOR OPERATION - FIELD CONFIGURABLE FL/FS
- ELECTRIC KEY OVERRIDE
- SPEED CONTROL
- ROTATION DETECTION
- HOME POSITION SWITCH
- STANDARD MECHANICAL LOCK



SECTION B-B  
THT-100TASTG (114")  
FOOT PRINT  
SCALE 1 / 12